

bathroom, kitchen and laundry

in housing production: prefab wet cell-unit design for building retrofit

MISMATCH

URBAN AND ARCHITECTURE DESIGN

DEVELOPMENT AND PRODUCTION

author: natália maria gaspar, msc. architecture and urban planner

design project developed as undergraduate thesis in architecture and urban planning, in 2009.

advisor: paulo eduardo fonseca de campos, ph.d

Summary

3 functions wet cell-unit – 4,95m², page 3

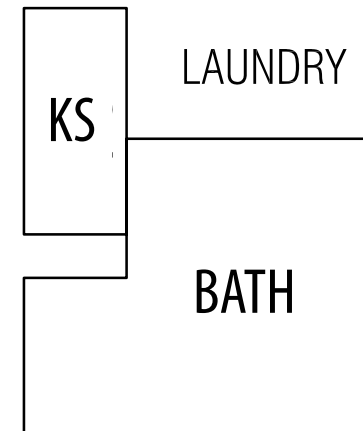
4 functions wet cell-unit – 5,30m², page 6

accessible wet cell-unit – 7,30m², page 9

the prefabricated wet cell-unit for building retrofit, page 12

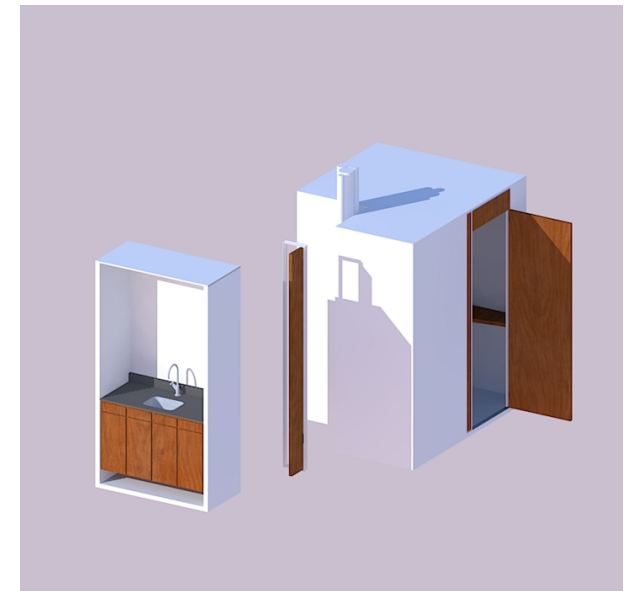
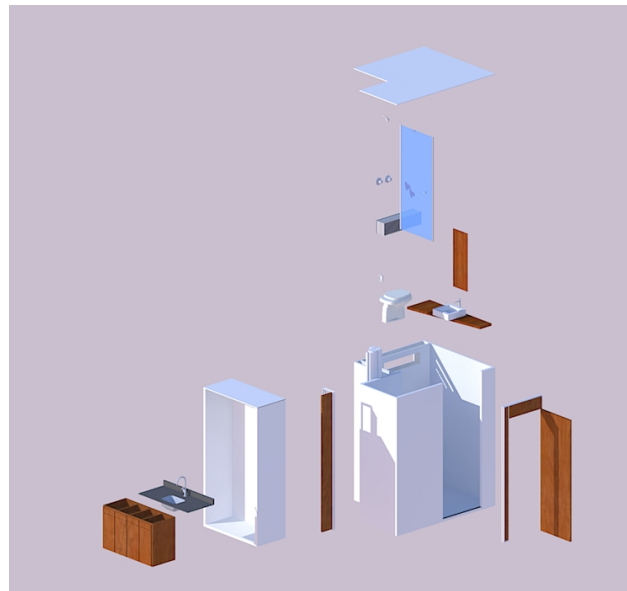
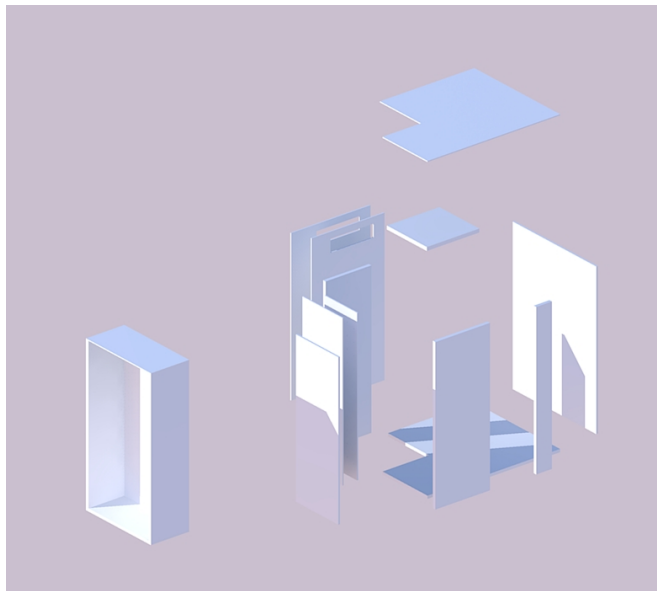
santos dummont building, page 13

3 functions wet cell-unit – 4,95m²



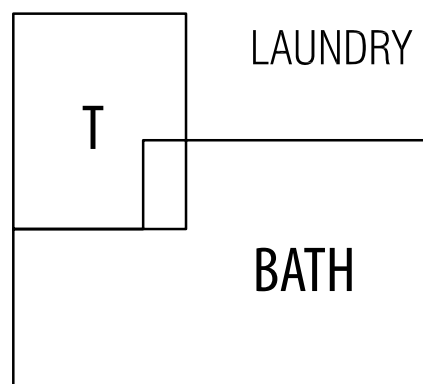
KS: Kitchen sink





assembly line scheme

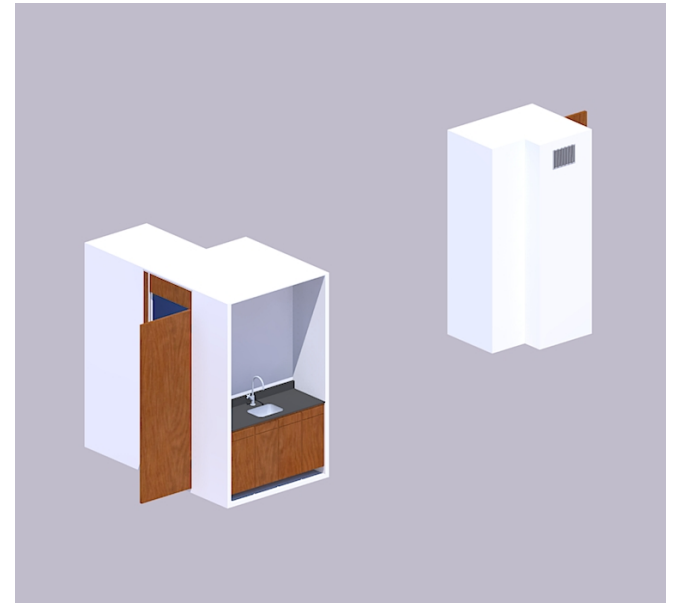
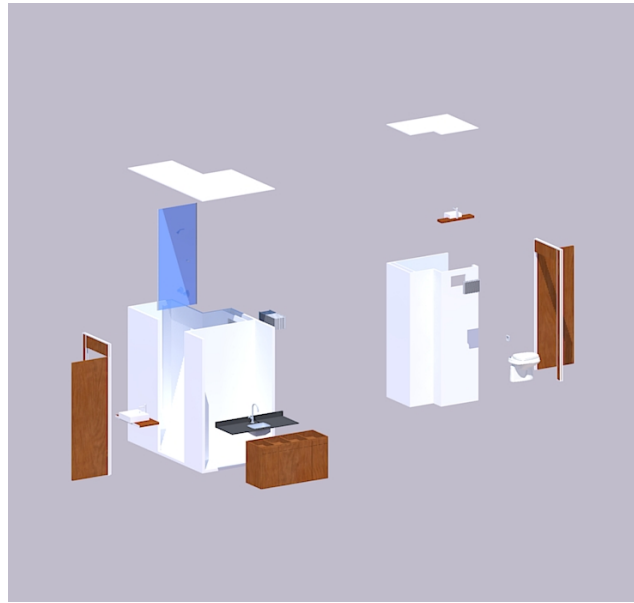
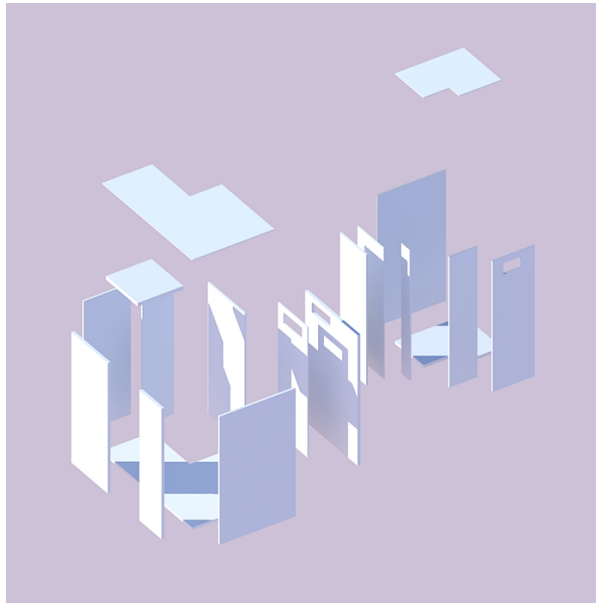
4 functions wet cell-unit – 5,30m²



T: Toilet

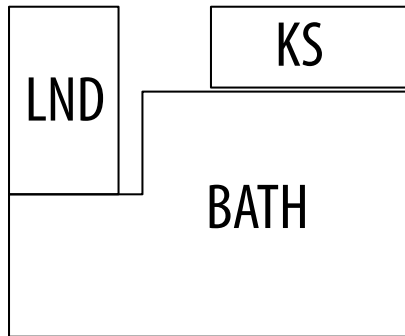






assembly line scheme

accessible wet cell-unit – 7,30m²

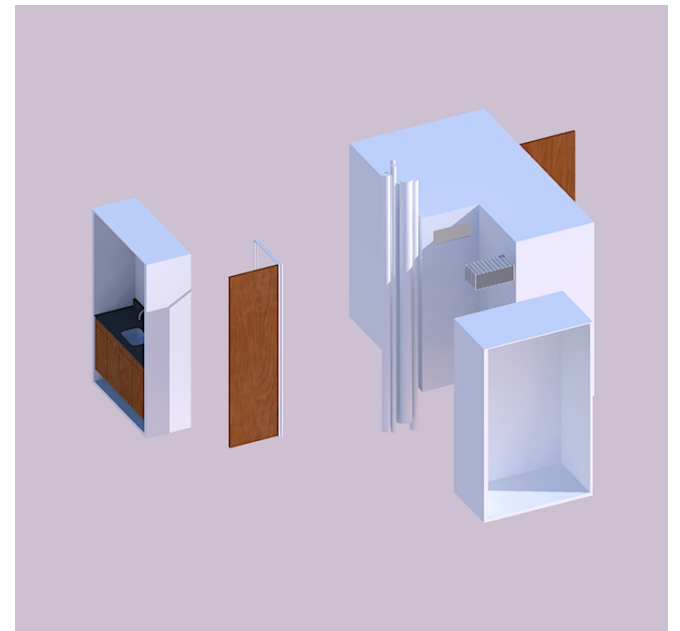
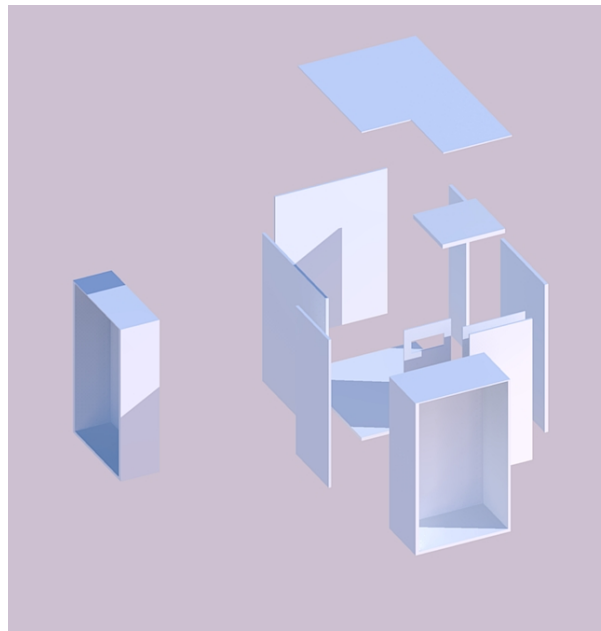
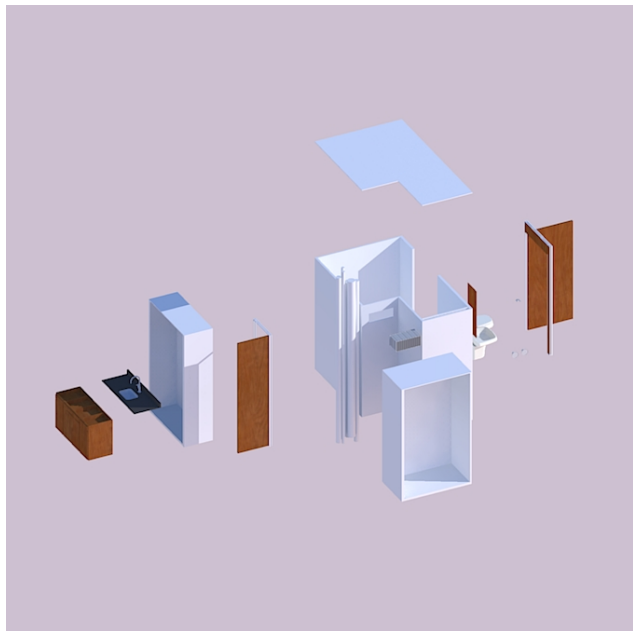


LND: laundry

KS: Kitchen sink

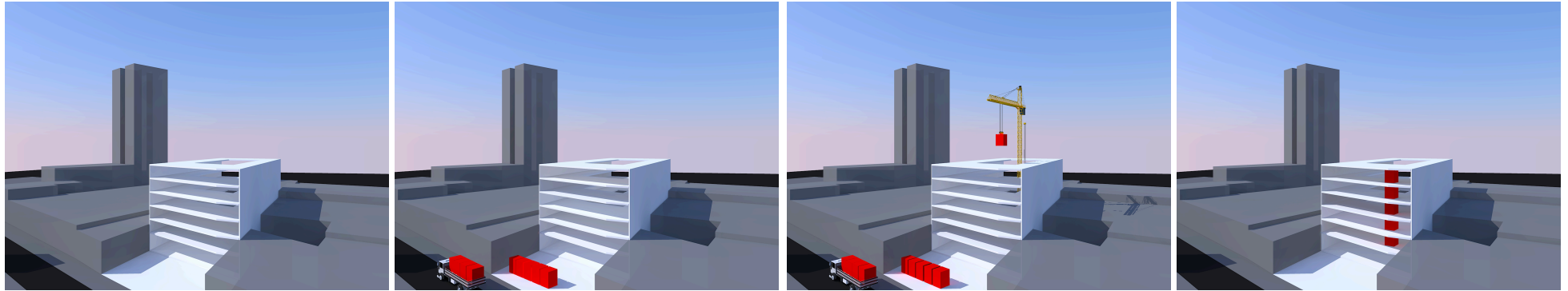






assembly line scheme

the prefabricated wet cell-unit for building retrofit



A simulation of the Prefab wet cell-units is studied in the case of Santos Dummont building, located in São Paulo downtown area, Brazil, which we consider could be retrofitted to social housing purposes. The building is located in front of the Luz

Train Station (one of the oldest stations in São Paulo). In the scheme shown up at this poster, the units are transported by truck to the building and are vertically transported to the floor by crane. After that, they are set in the floors next to the orifices in the

slabs for vertical plumbing. By using the prefab hydraulic units, the apartments' interiors are made more flexible to the changes made by the families, besides making the retrofit work faster. More rationalized and industrialized building make better

the working conditions, which causes effects in the income production and in the formal jobs market. It is relevant in the field of the social housing production and in the production of the city.

santos dummont building



santos dumont building - main elevation



santos dumont building
view of courtyard



santos dumont building
view of courtyard



santos dumont building
view of courtyard



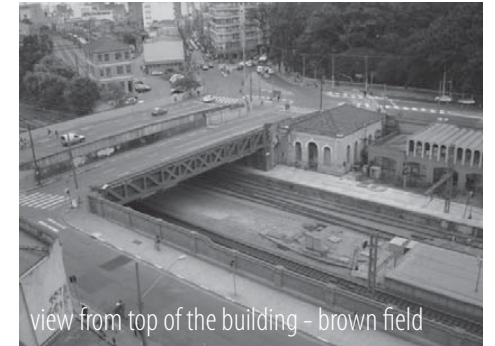
view from top of the building - José Paulino Street



santos dumont building
typical floor corridor



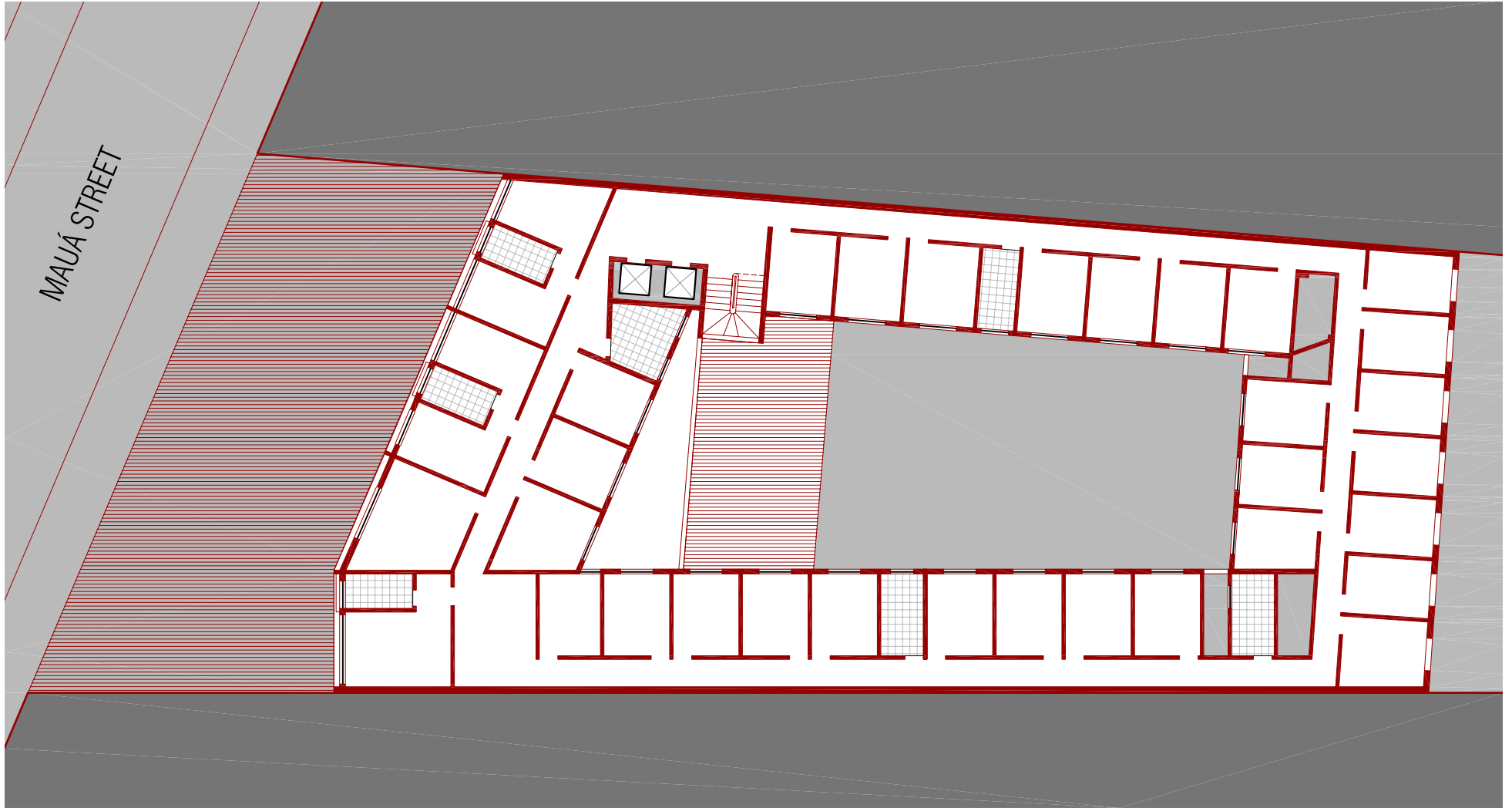
view from top of the building - brown field



view from top of the building - brown field

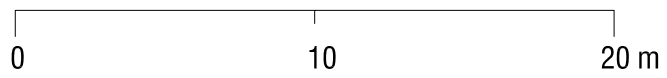


view from top of the building - Luz Station



TYPICAL FLOOR - existent

1st. FLOOR to 6th. FLOOR





TYPICAL FLOOR - new apartments

1st. FLOOR to 6th. FLOOR

